



a world class African city



City of Johannesburg
Johannesburg Roads Agency

75 Helen Joseph Street
Cnr. Harrison Street
Johannesburg
2001

P/Bag X70
Braamfontein
South Africa
2017

Tel +27(0) 11 298 5000
Fax +27(0) 11 298 5178
www.jra.org.za
www.joburg.org.za

3 March 2026
For immediate release

TRAFFIC ADVISORY:
TEMPORARY CLOSURE OF M1 SMIT STREET INTERCHANGE OFF-RAMPS

Motorists are advised of a scheduled temporary closure affecting the **M1 Smit Street Interchange off-ramps (northbound and southbound)** from Saturday, 7 March 2026 to Monday 9 March 2026 to allow the **Johannesburg Roads Agency (JRA)** to undertake essential road testing and investigations.

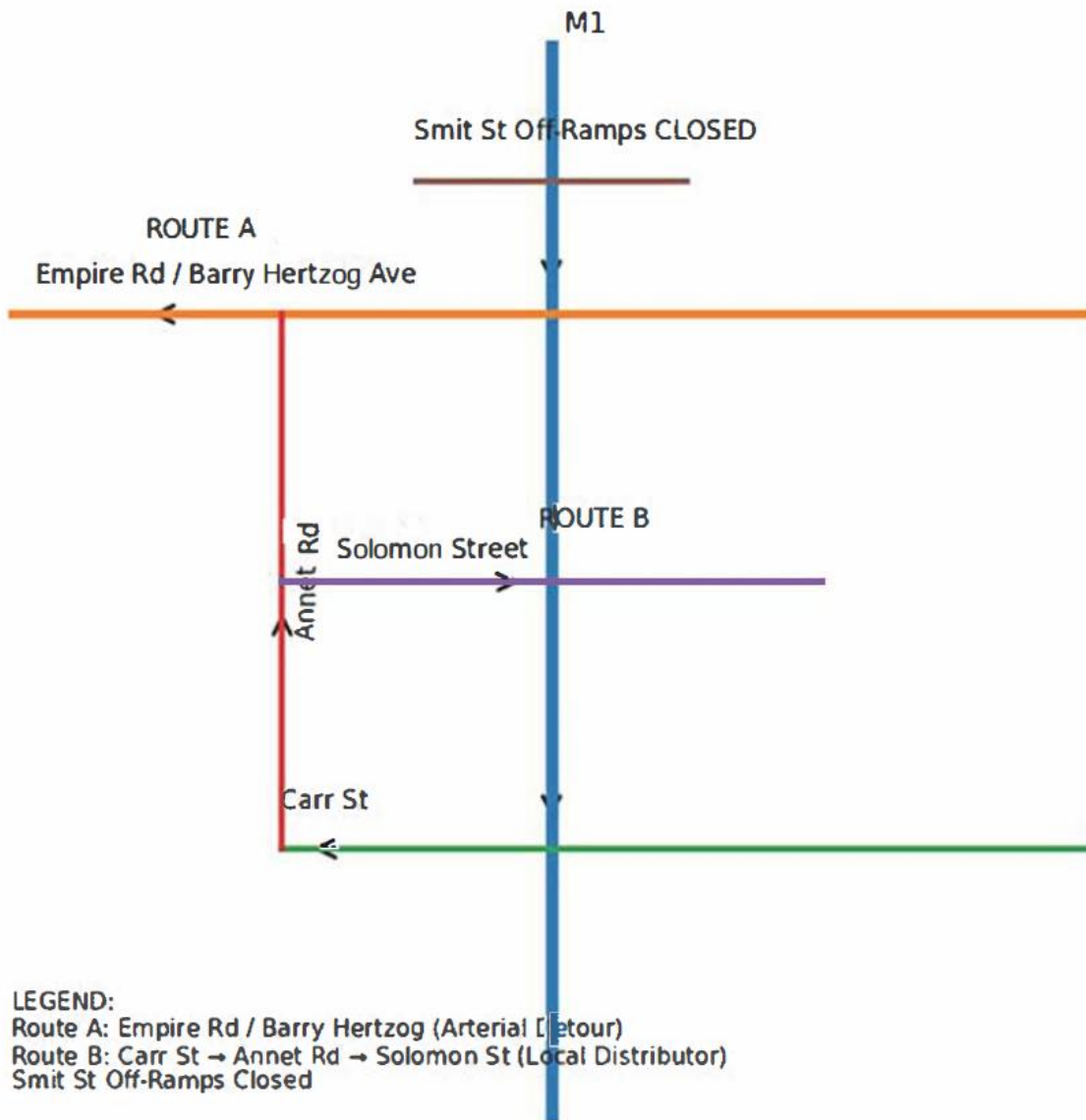
Closure Schedule

- **Location:** M1 Smit Street Interchange Off-Ramps
- **Effective Dates:** Saturday 7 March 2026 - Monday, 9 March 2026
- **Daily Closure Times:** 09h00 to 15h00
- **Peak Hour Access:** All ramps will be fully reopened during morning and afternoon peak hour traffic to ease traffic flow.

Full traffic accommodation, traffic control officers, and clearly marked detour signage will be implemented. Motorists are advised to plan their trips in advance, allow additional travel time, and follow posted detour signage. Public transport operators are requested to brief drivers on the alternative routes provided below.

APPROVED ALTERNATIVE ROUTES (WEST OF M1)

To prevent congestion within the Braamfontein CBD grid and to maintain efficient traffic flow, motorists are advised to use the following **two primary alternative routes:**



ROUTE A — PRIMARY ARTERIAL DETOUR (RECOMMENDED FOR GENERAL & HEAVY TRAFFIC)

Via Empire Road → Barry Hertzog Avenue

This route uses major arterials designed to carry high traffic volumes and is suitable for buses, taxis, and heavy vehicles.

From M1 South (from Sandton/Pretoria direction)

1. Take the **Empire Road off-ramp**
2. Turn **right onto Empire Road** (westbound)
3. Continue straight (Empire becomes **Barry Hertzog Avenue**)
4. Access Braamfontein/Smit area via:

- **Annet Road**
- **Solomon Street**
- **De Korte Street**
- **Biccard / Jorissen Streets**

From M1 North (from CBD direction)

1. Take the **Empire Road off-ramp**
2. Turn **left onto Empire Road**
3. Follow the same access options listed above

ROUTE B — SECONDARY LOCAL DISTRIBUTOR (LIGHT VEHICLES & LOCAL ACCESS)

Via Carr Street → Annet Road → Solomon Street

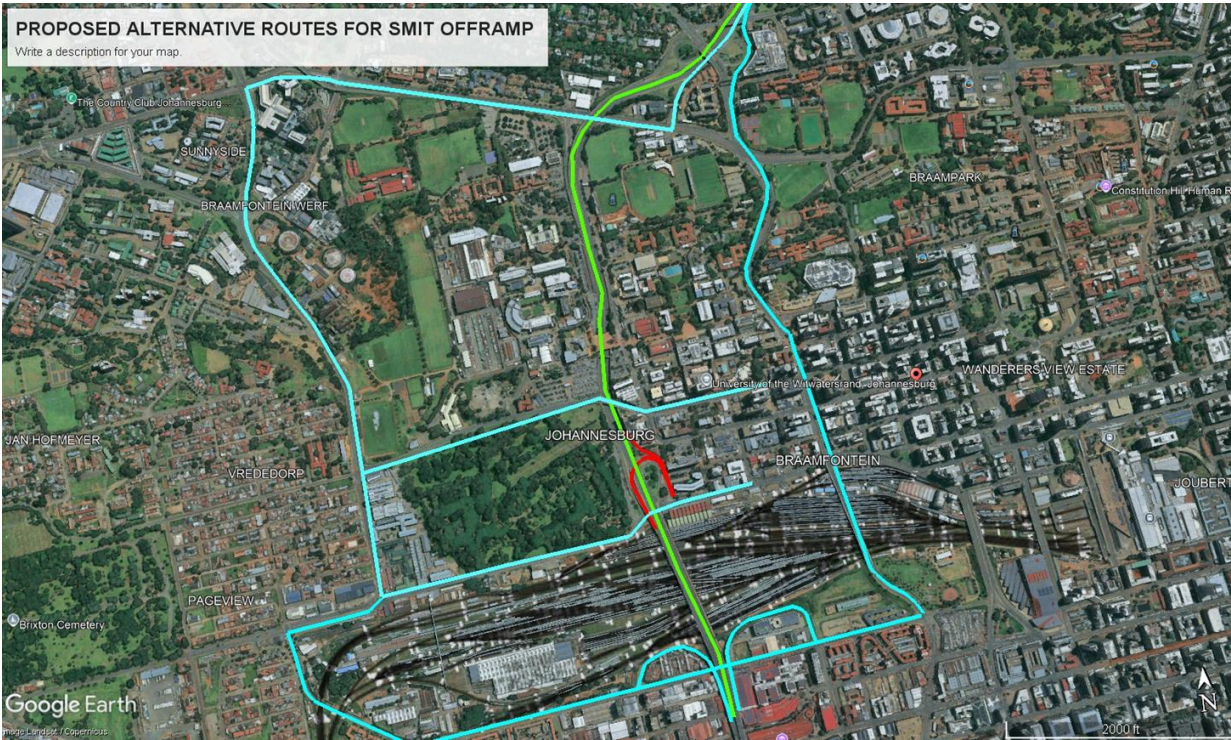
This route provides direct access for Wits University, Braamfontein west, and local traffic by avoiding congestion within the CBD grid and near the Nelson Mandela Bridge.

From M1 North

1. Take the **Carr Street off-ramp**
2. Turn **left into Carr Street**
3. Turn **right into Annet Road**
4. Turn **left into Solomon Street**
5. Proceed into Braamfontein west / Wits Precinct

From M1 South

1. Take the **Empire Road off-ramp**
2. Turn **right onto Empire Road**
3. Turn **right into Annet Road**
4. Turn **left into Solomon Street**



JRA appreciates your patience and cooperation as we work to maintain the safety and quality of Johannesburg's road network.

Issued by:
Johannesburg Roads Agency
City of Joburg